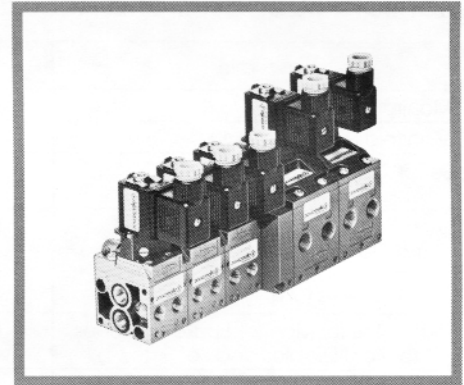


Specifications

Media : Air filtered, lubricated or dry
 Operating Pressure : 0 to 150 PSI (1)
 Pilot Pressure : Min 30 PSI
 Temperature Range : 20°F to 140°F

Construction

Body: zinc diecasting
 Integral parts: brass and Delrin
 Sealing: Nitrile (NBR)



Electrical Characteristics

Pilot	Voltages		Consumption		Response Time	Insulation Class	Electrical Connector
			Inrush	Holding			
Series 189 (UL Recognized Component)	AC	24 V, 48 V, 120 V, 220 V 240 V, 50/60 Hz	6 VA	3.5 VA (2.5 W)	5ms	F	Cable CM8 (PE9) or 1/2" Conduit Plug Rotatable x 180°
	DC	12 V, 24 V, 48 V, 110 V	2.5 W				

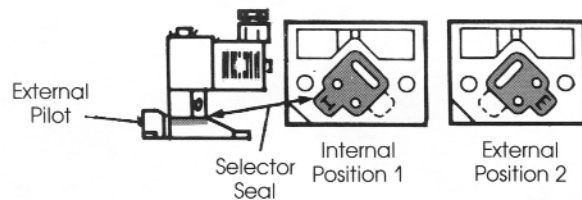
Selection Chart

1 = Pressure 2,4 = Outlets 3 = Exhaust	Operators		Ports	Orifice	Flow Coefficient CV	Pilot Pressure PSI		Manual Override Locking	Model Numbers	
	14	12				Min	Max		Without Flow Control	With Flow Control
		Solenoid Air Internal or External				Spring	1/8" NPT		.12	0.2
	Air External	Spring	1/8" NPT	.12	0.2	30	150	N/A	263 00 009	263 00 010

(1) External supply enables these valves to be used with media pressures 15 to 150 PSI.

Pilot Selector Seal

The Solenoid operator is equipped with a selector seal between the solenoid and valve body. This seal allows for piloting either with internal or external signal. To change from internal to external remove solenoid operator and change seal as shown below:



The selector seal is marked I for internal pilot and E for external. As standard the solenoid version is supplied with the seal set for internal pilot pressure.

Accessory: Manifold Flow Control

- Manifold flow control No. 34600210 fits directly on use ports. Combination screw or knob control is featured. Locking nut is standard as is two stage needle and fine control through the range.

Accessory: Transition Plate

- Transition plate No. 88126303 allows manifolding of series 263 and 264. This plate fits between the two series and connects ports 1, pressure and 3, exhaust to allow common pressure and exhaust between these two series in the same manifold.

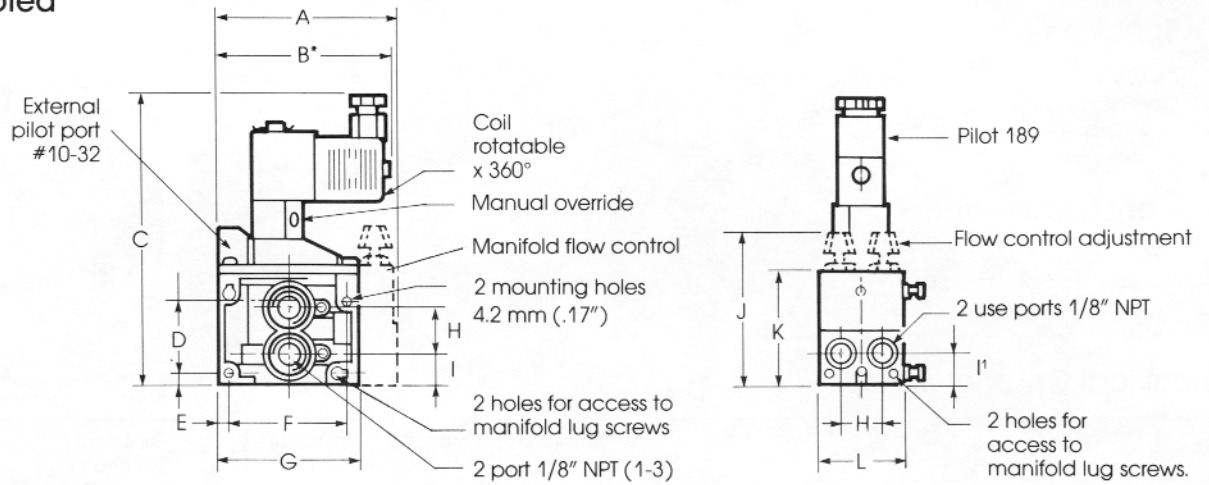
Accessory: Separate Pressure Plate

- Separate pressure plate No. 88126302 allows more than one pressure to the manifold. This plate fits between two series 263 either solenoid or air pilot operated.

Accessory: Mtg. Rail

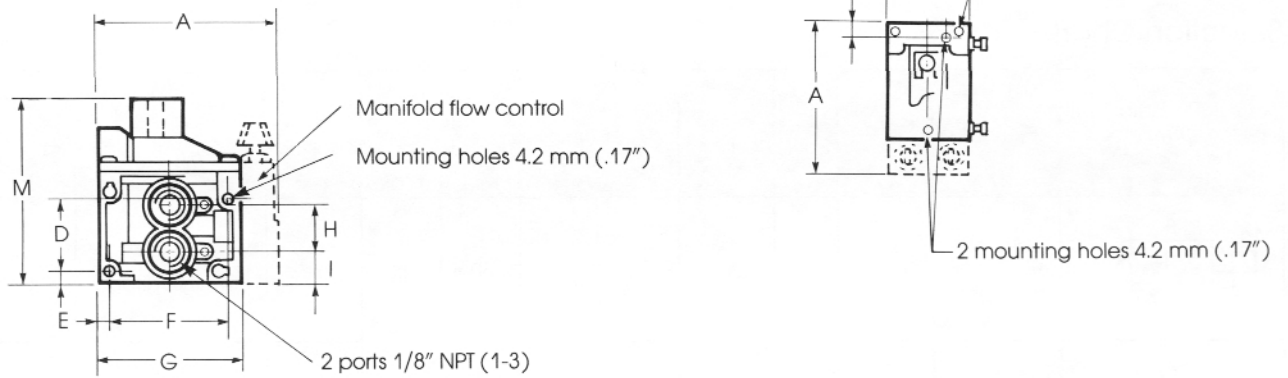
- Mtg. Rail No. 33400033 and clip No. 33400036 allow manifold mounting easily.

Solenoid Piloted



* +15 mm (.59") for plug removal

Air Piloted



Dimensions on Air and Solenoid Piloted Valve

	A	B	C	D	E	F	G	H	I	I ₁	I ₂	J	K	L	M
inch	2.99	2.56	4.60	1.18	.15	1.53	1.83	.63	.35	.71	.16	2.75	1.97	1.34	2.56
mm	76	65	117	30	4	39	46.5	16	9	18	4	70	50	34	65

Dimensions on Manifold Subbase

		Number of Subbases						
		2	3	4	5	6	7	8
X	inch	2.68	4.00	5.35	6.69	8.03	9.37	10.70
	mm	68	102	136	170	204	238	272
Y	inch	1.34	2.68	4.00	5.35	6.69	8.03	9.37
	mm	34	68	102	136	170	204	238

Manifolding Detail

